

## First Time Setup - Create Desktop Shortcut

Links are provided upon sign-up and are emailed to new users. You can access the login screen by clicking on the link.

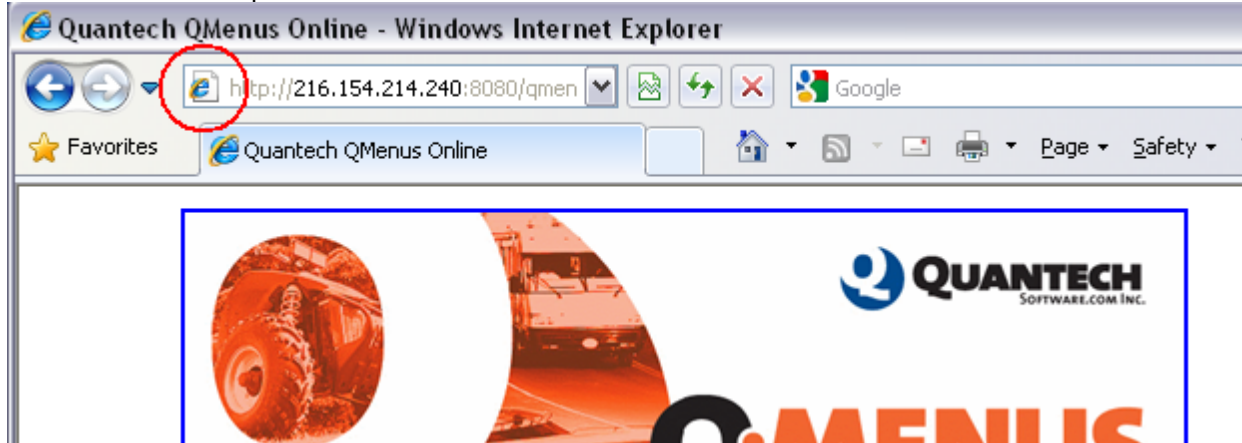


For easier access to QMenu Online you may want to create a link (shortcut) on your computer's Desktop. From the QMenu Online log in page, **click and drag** the page icon from your browser to your desktop (see graphic).

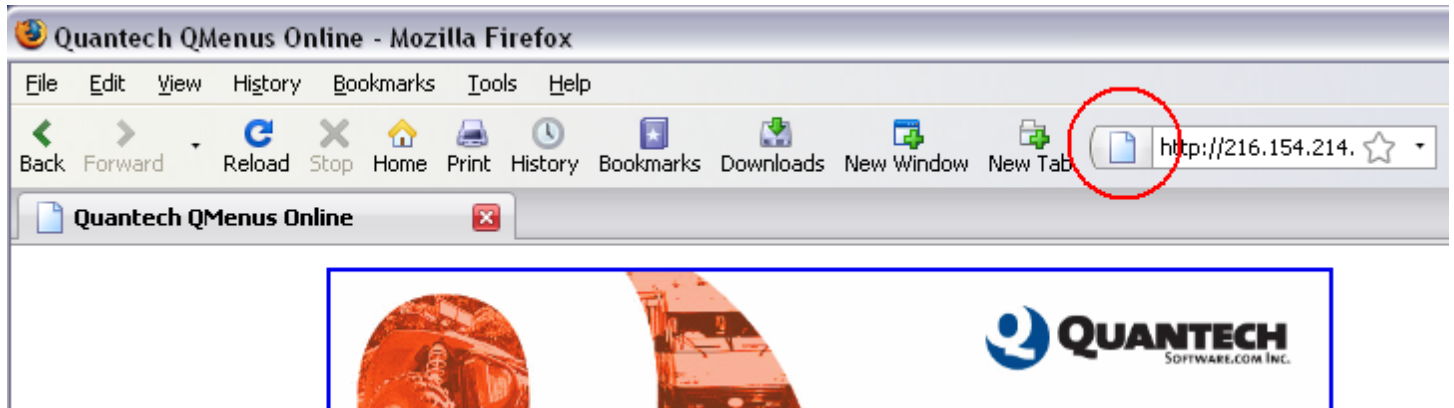
This will create a shortcut pointing to the QMenu login page.

Note: The icon on your Internet browser may differ from the following samples we've provided.

Windows Internet Explorer



Mozilla Firefox



Google Chrome

